

480

High-airflow built-in wall louvres

BUILT-IN WALL
LOUVRE

ALUMINIUM



MATERIAL

- Made from aluminium sections: AlMgSi 0.5 (according to EN 12020-2)
- Stainless steel 304 mesh (6 x 6 mm)
- Finishing: anodized in satin colour (20 micron) or powder-coated in any RAL or Syntha Pulvin colour (40 micron)

DIMENSIONS

- Blade pitch: 60 mm
- Depth to fit: 82 mm
- Flange size: 50 mm
- Minimum dimensions: 300 x 300 mm

FIXING

- Brackets ref. 429
- For louvres larger than approx. 3 m², a reinforcing mullion is required to suit span and windload

OPTIONS

- Water channel
- Drainage profile
- Removable mesh
- Filter
- Without flange
- Glazed-in louvre 483 (*see p. 98*)
- Stainless steel 304 insect screen 2,3x2,3 or mesh (10x10/20x20 mm) or without
- Insect screen or mesh in stainless steel 316

TYPICAL APPLICATIONS

- Underground parking
- Industrial applications

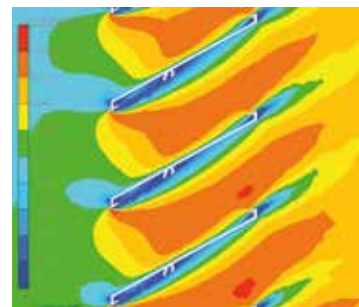


TECHNICAL SPECIFICATIONS

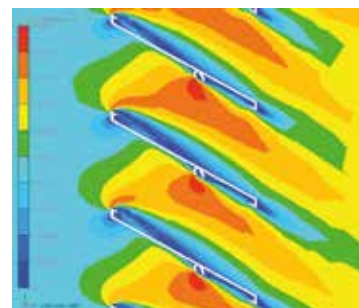
All properties are valid for the standard version of the Louvre, unless otherwise stated.

Airflow		[EN 13030]
K-factor [entry]		4,60
K-factor [discharge]		5,17
C _e coefficient		0,466
C _d coefficient		0,440
Technical data		
Visual free area		90%
Physical free area		76%
IP class [louvre with mesh; electrical installation at least 180 mm from louvre]		IP2XD

AIRFLOW



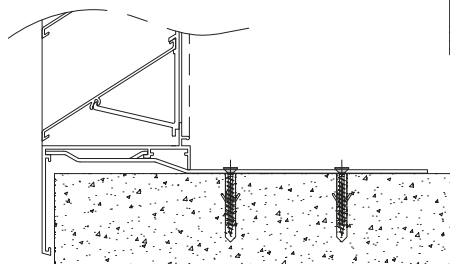
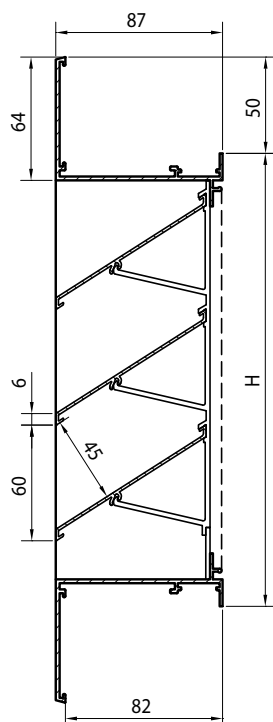
Supply



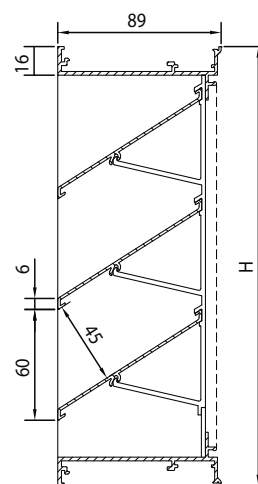
Discharge

TECHNICAL DRAWINGS

Cross-sections



Brackets no. 429



Without flange
no. 480ZF